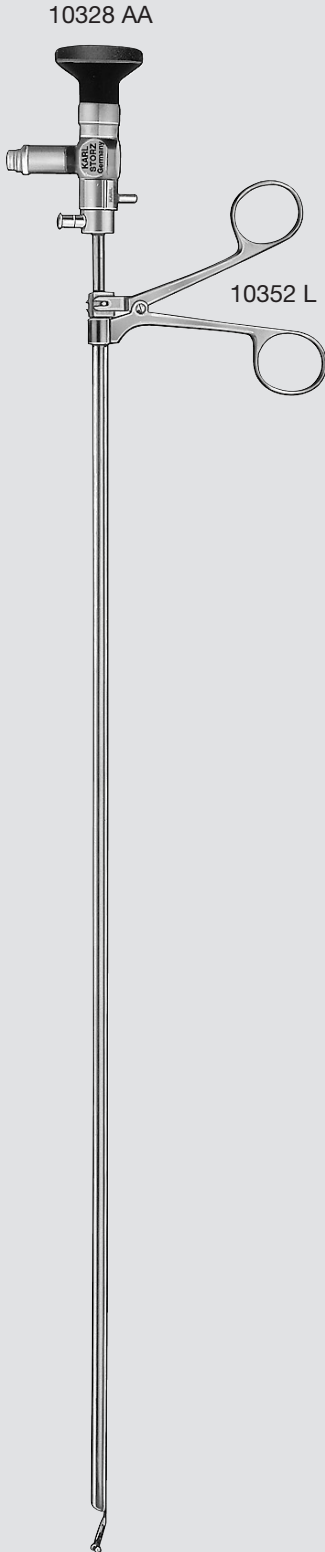


Optical Forceps



Special Features:

- The jaws of the forceps and the region of biopsy are well visualized prior to and during the procedure.
- Foreign bodies can now be removed quickly under optical control.
- The spring-action handle of the grasping forceps prevents excess pressure being applied to the foreign body.
- The depth of cut during biopsy is much easier to assess.

For use with HOPKINS® Telescope 10328 AA and Universal Bronchoscopes 10318 B – DP, size 8.5 to 6.5



10328 AA **HOPKINS® Straight Forward Telescope 0°**, diameter 4.5 mm, length 50 cm, **autoclavable**, fiber optic light transmission incorporated, color code: green

10352 H **Optical Forceps**, alligator, for hard foreign bodies

NEW

10352 KF **Optical Forceps**, for peanuts and soft foreign bodies, with spring-action handle

10352 L **Optical Forceps**, spoon-shaped, round, for biopsy

10352 U **Optical Forceps**, universal, for biopsy, for removal of foreign bodies and denatured tissue



10352 H



10352 KF



10352 L



10352 U

Universal Bronchoscopes for Adults

with proximal illumination

Special Features:

- Absence of distal light carrier does not restrict inner diameter
- Prismatic Light Deflector 10101 FA inserted proximally ensures best illumination and enables full use of lumen through operating instruments
- Excellent view of operation area
- Smooth lumen allows insertion of flexible bronchoscopes

10314 P
10314 BN 10314 BM 10318 S
10101 FA 10318 K
10924 D

10318 BP ✓
10318 CP ✓
10318 DP ✓
10101 FA ✓
10314 BM ✓
10314 BN ✓
10314 P ✓
10318 K ✓
10318 S ✓
10924 D ✓
NEW 10924 DL ✓

Bronchoscope Tube Universal, without distal fiber optic light carrier, for use with proximally insertable Prismatic Light Deflector 10101 FA, size 8.5, length 43 cm

Same, size 7.5

Same, size 6.5

Prismatic Light Deflector, autoclavable, with connection to fiber optic light cable

Glass Window Plug

Rubber Telescope Guide

FLUVOG **Adaptor**, with observation window, cap with rubber seal and with window, adjustable

Injection Cannula, for positive pressure assisted ventilation system, LUER-Lock, outer diameter 3.5 mm

Instrument Guide, for suction catheter

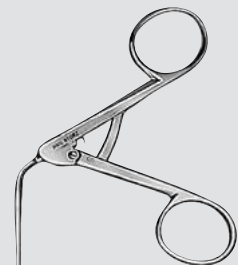
Adaptor, for respirator

Adaptor, for respirator, long version

10318 BP/CP/DP

Forceps for Bronchoscopy

double action jaws



Sheath diameter 2.5 mm, working length 50 cm

- ✓ 10370 H **Forceps**, alligator, for hard foreign bodies, double action jaws, sheath diameter 2.5 mm, working length 50 cm
- ✓ 10370 J **Same**, pointed, serrated, for coins and flat foreign bodies
- ✓ 10370 K **Same**, for peanuts and soft foreign bodies
- ✓ 10370 L **Same**, spoon-shaped, round, for biopsy
- ✓ 10370 M **Same**, spoon-shaped, round, for biopsy, malleable
- ✓ 10370 P **Same**, with oval cupped jaws, fenestrated, for biopsy and foreign bodies
- 10370 U **Same**, universal, for biopsy and foreign bodies removal



10370 H



10370 J



10370 K



10370 L



10370 M



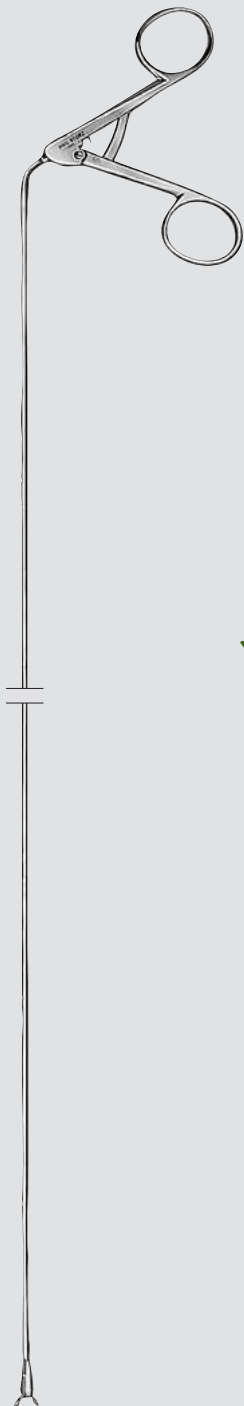
10370 P



10370 U

Forceps for Bronchoscopy

double action jaws



Sheath diameter 2.5 mm, working length 50 cm

- 10370 H **Forceps**, alligator, for hard foreign bodies, double action jaws, sheath diameter 2.5 mm, working length 50 cm
- 10370 J **Same**, pointed, serrated, for coins and flat foreign bodies
- 10370 K **Same**, for peanuts and soft foreign bodies
- 10370 L **Same**, spoon-shaped, round, for biopsy
- 10370 M **Same**, spoon-shaped, round, for biopsy, malleable
- 10370 P **Same**, with oval cupped jaws, fenestrated, for biopsy and foreign bodies
- ✓ 10370 U **Same**, universal, for biopsy and foreign bodies removal



10370 H



10370 J



10370 K



10370 L



10370 M



10370 P



10370 U

Accessories for Bronchoscopy

Suction Tubes, Cotton Carriers, Sponge Holders and Catheters

10380 A - H

10383 A - F

10381 A - B

10382 A - B

10390 AN/BN

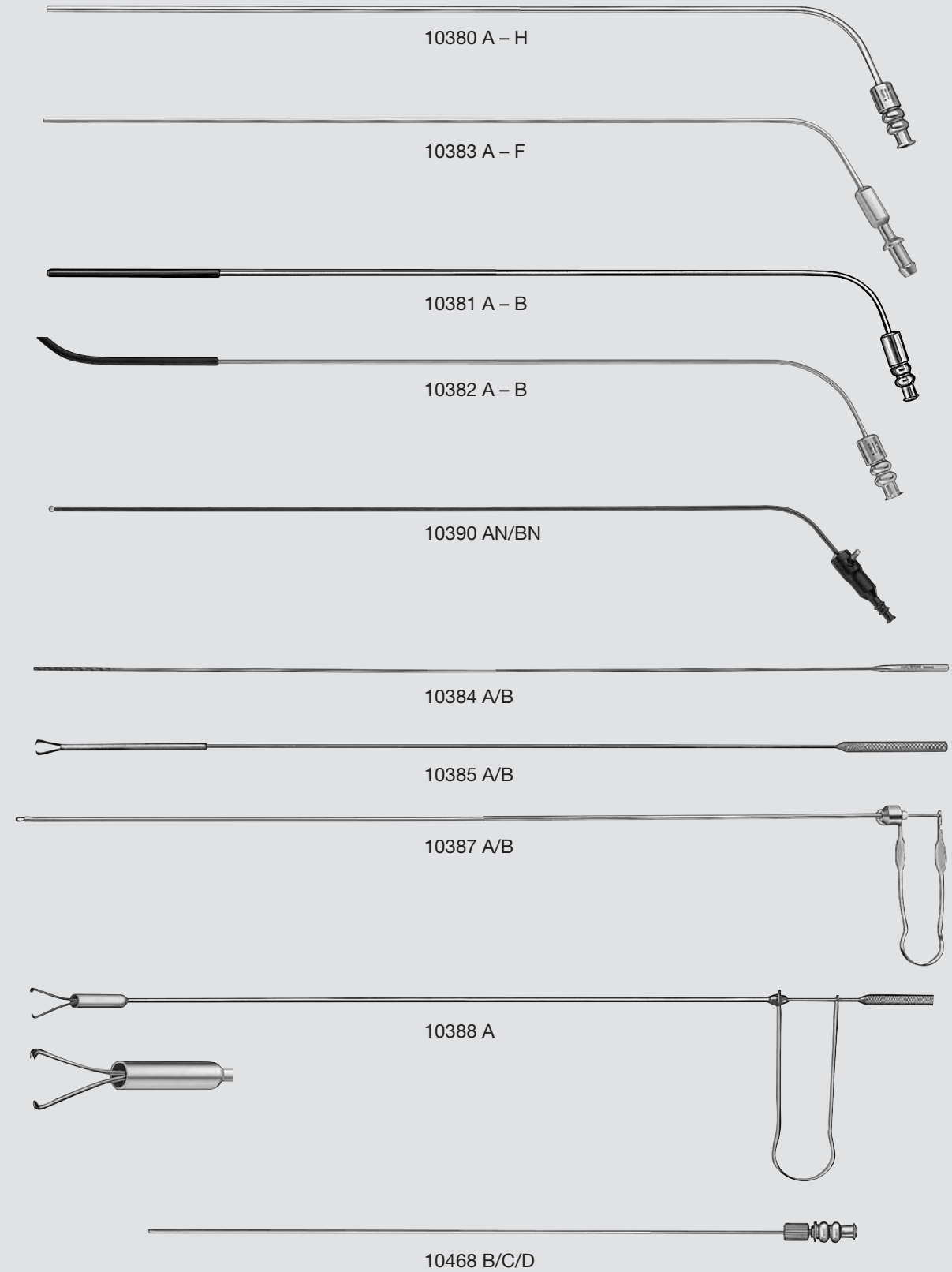
10384 A/B

10385 A/B

10387 A/B

10388 A

10468 B/C/D



Description of instruments see page 649

Accessories for Bronchoscopy

Suction Tubes, Cotton Carriers, Sponge Holders and Catheters

Working length 50 cm

✓ 10380 A	Suction Tube , diameter 4 mm
10380 D	Same , diameter 2.5 mm
10380 H	Same , diameter 5 mm
10383 A	Suction Tube , with cut-off hole, diameter 4 mm
10381 A	Suction Tube , with rubber tip, straight, diameter 4 mm
10382 A	Same , curved
10390 AN	Coagulation Suction Tube , insulated, with connector pin for unipolar coagulation, diameter 4 mm
10384 A	Cotton Applicator
10385 A	Sponge Holder
10387 A	Sponge Holder , with spring handle
10388 A	Sponge Holder , for sterile smears

Working length 35 cm

10380 AK	Suction Tube , diameter 4 mm
10380 B	Same , diameter 3 mm
10380 CB	Same , diameter 2 mm
10383 B	Suction Tube , with cut-off hole, diameter 3 mm
10383 BL	Same , diameter 5.5 mm
10381 B	Suction Tube , straight, with rubber tip, diameter 2 mm
10382 B	Same , curved
10390 BN	Coagulating Suction Tube , insulated, with connector pin for unipolar coagulation, diameter 3 mm
10384 B	Cotton Applicator
10385 B	Sponge Holder
10387 B	Sponge Holder , with spring handle

Working length 30 cm

10383 DD	Suction Tube , with cut-off hole, diameter 2 mm
10383 F	Same , diameter 3 mm

Working length 25 cm

10380 C	Suction Tube , diameter 2 mm
10383 C	Suction Tube , with cut-off hole, diameter 2 mm
10383 CC	Same , diameter 1 mm
10383 D	Same , diameter 3 mm
10383 E	Same , diameter 4 mm

For use through the working channel under control of HOPKINS® telescope:

10468 B	Suction Catheter , 7 Fr., with Adaptor 10479 B
10468 C	Same , 6 Fr., with Adaptor 10479 C
10468 D	Same , 4 Fr., with Adaptor 10479 F

Components/Spare Parts see chapter 16